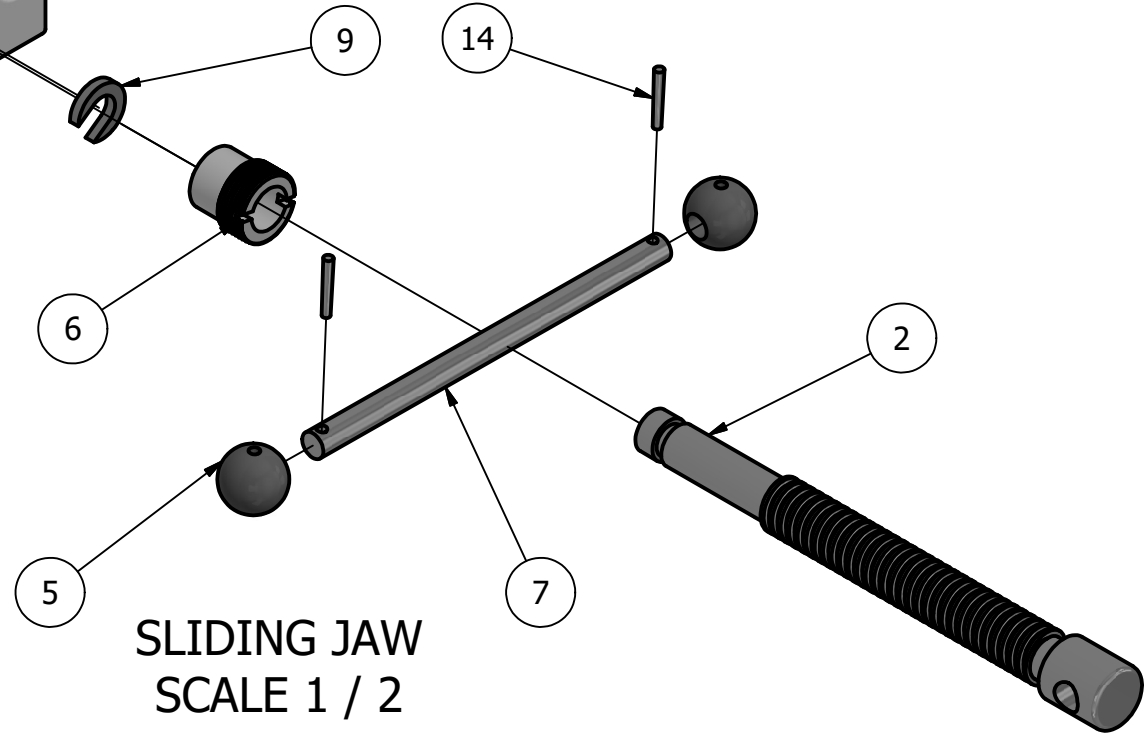
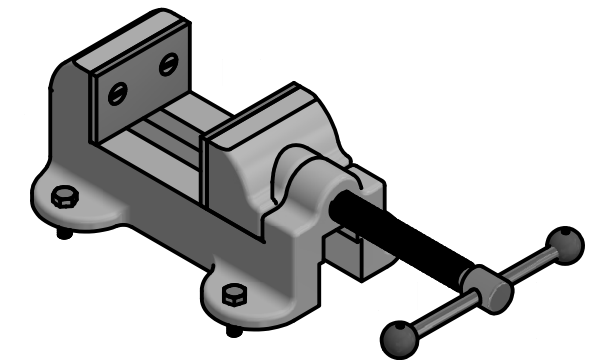


PARTS LIST				
ITEM	QTY	PART NUMBER	MATERIAL	DESCRIPTION
1	1	BASE	CAST IRON	
2	1	WISE SCREW	SAE 3140	
3	2	JAW PLATE	SAE 3140	.1875 THICK
4	1	SLIDING JAW	CAST IRON	
5	2	HANDLE BALL	SAE 1020	
6	1	COLLAR	SAE 1020	
7	1	HANDLE ROD	CARBON STEEL	
8	2	SLIDE KEY	SAE 1020	
9	1	SPECIAL KEY	SAE 1020	
10	4	COUNTERSUCK SCREW	SAE 1016	1/4 FL HD MACH SCREW
11	4	HEX BOLT	SAE 1020	1/4-20 UNC - 0.875
12	2	SET SCREW	SAE 1016	#12(.216)-24UNC-2A
13	2	TAPER PIN	SAE 1020	TAPER PIN #000



SLIDING JAW
SCALE 1 / 2



MACHINE VISE ASSEMBLED
SCALE 1 / 4

LEGEND: BASE EXPLODED
SCALE 1 / 2

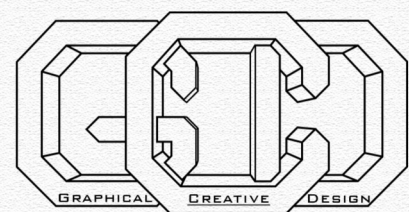
- ∅ DIAMETER
- R RADIUS
- ° DEGREES
- ∇ DEPTH

GENERAL NOTES: ALL FILLETS AND ROUNDS ARE 1/8 UNLESS SPECIFIED

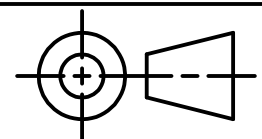


DIGITAL DESIGN
GRAPHICS
TECHNOLOGY

WWW.DDGT.NET



BRYAN LOPEZ
GRAPHIC DESIGNER
GRAPHICALCREATIVEDSIGN@GMAIL.COM

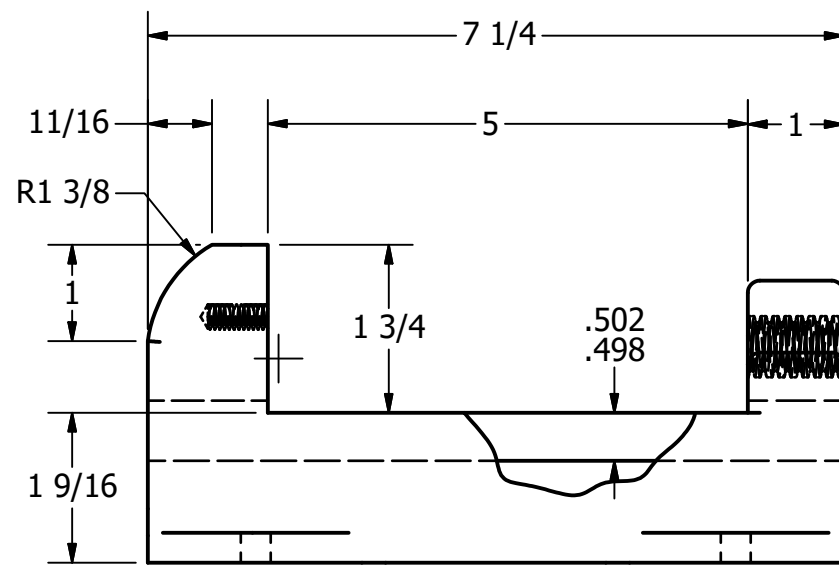
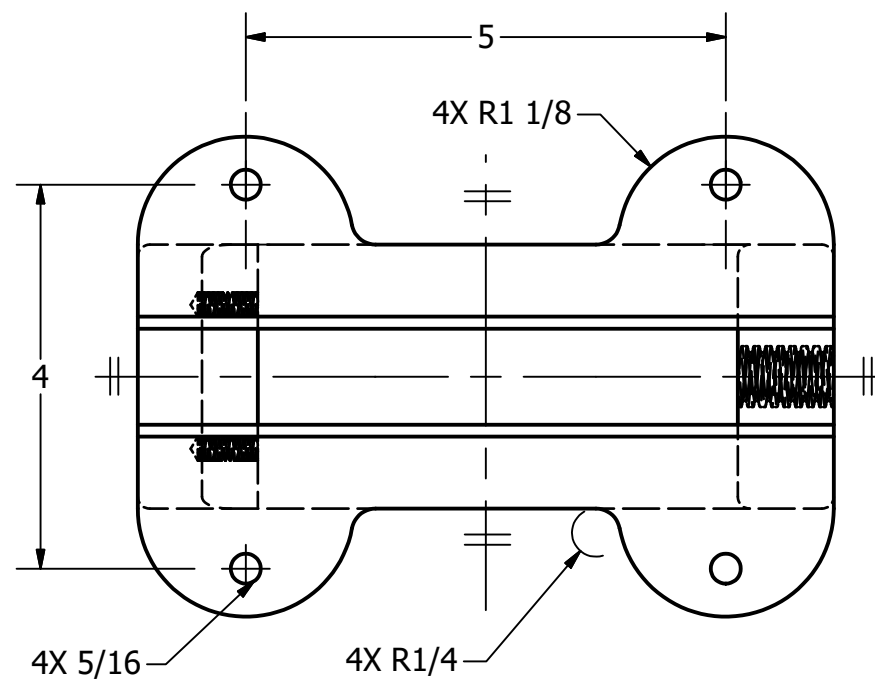


TOLERANCES UNLESS SPECIFIED:
DECIMAL INCHES:
X = ± .020
XX = ± .010
XXX = ± .005
FRACTIONAL ± 1/64"
ANGLES ± 1 DEGREE
SURFACES 32 ✓

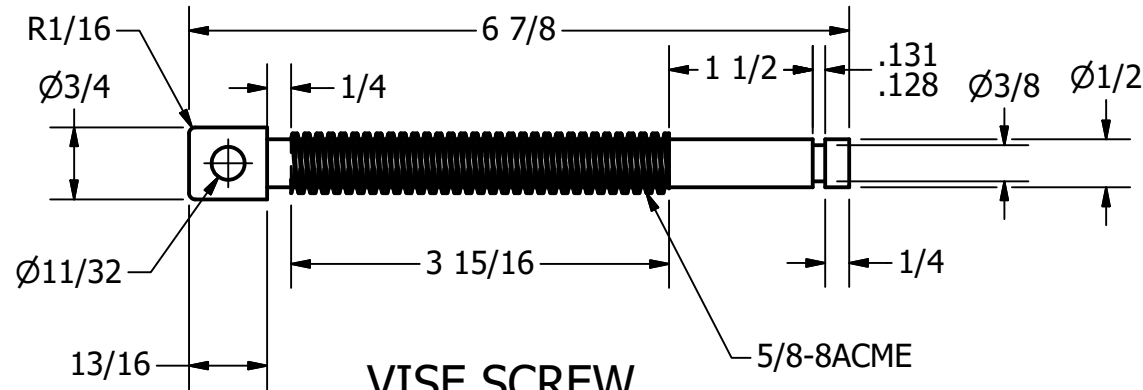
COURSE:	DDGT 240
INVENTOR DRAWING NAME:	MACHINE VISE
FIG #:	14-71
DRAFTER:	B. LOPEZ
DATE:	10/2/2019
SCALE:	AS NOTED
PAGE #:	1 OF 4

PARTS LIST

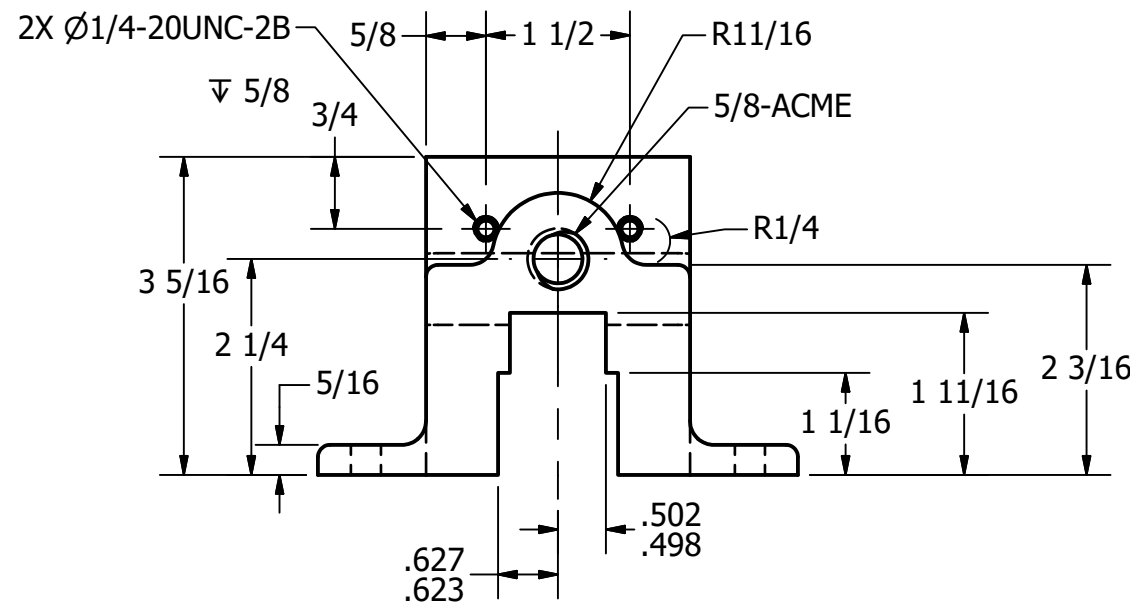
ITEM	QTY	PART NUMBER	DESCRIPTION	MATERIAL
1	1	BASE		CAST IRON
2	1	WISE SCREW		SAE 3140
7	1	HANDLE ROD		CARBON STEEL
13	2	TAPER PIN	TAPER PIN #000	SAE 1020



BASE
SCALE 1 / 2

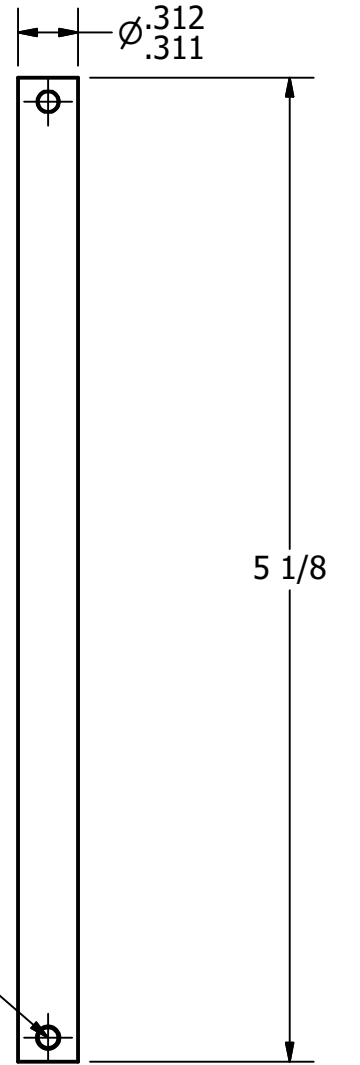


WISE SCREW
SCALE 1 / 2



2X DRILL AND
REAM WITH
HANDLE BALL
IN PLACE

HANDLE ROD
SCALE 1 : 1



LEGEND:

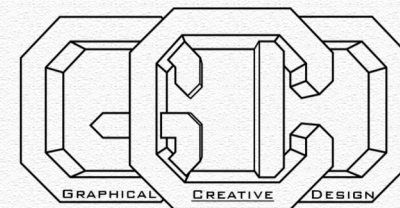
- Ø DIAMETER
- R RADIUS
- ° DEGREES
- ∇ DEPTH

GENERAL NOTES: ALL FILLETS AND ROUNDS ARE 1/8 UNLESS SPECIFIED



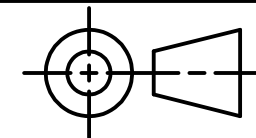
DIGITAL DESIGN
GRAPHICS
TECHNOLOGY

WWW.DDGT.NET



BRYAN LOPEZ
GRAPHIC DESIGNER

GRAPHICALCREATIVEDESIGN@GMAIL.COM



TOLERANCES UNLESS SPECIFIED:
DECIMAL INCHES:
X = ± .020
XX = ± .010
XXX = ± .005
FRACTIONAL ± 1/64"
ANGLES ± 1 DEGREE
SURFACES 32 ✓

COURSE: DDGT 240

INVENTOR DRAWING NAME:
MACHINE VISE

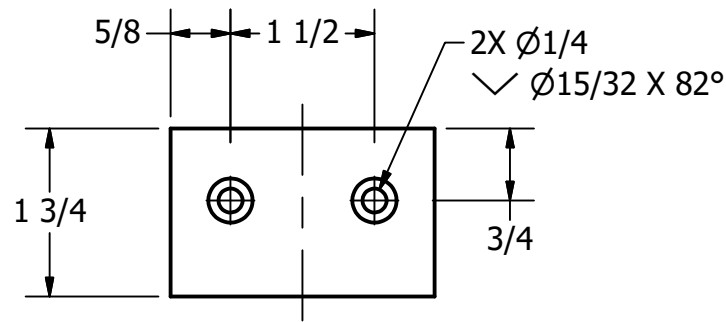
FIG #: 14-71

DRAFTER: B. LOPEZ

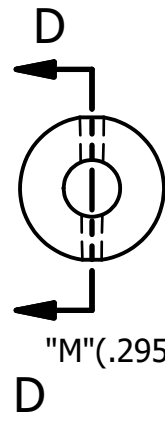
DATE: 10/2/2019

SCALE: AS NOTED

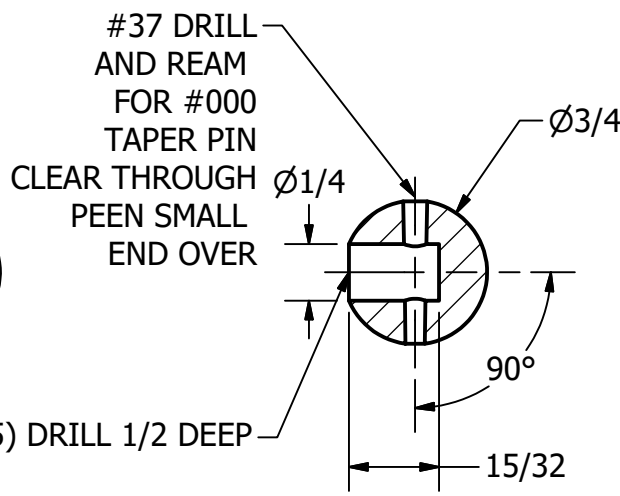
PAGE #: 2 OF 4



JAW PLATE
SCALE 1 / 2

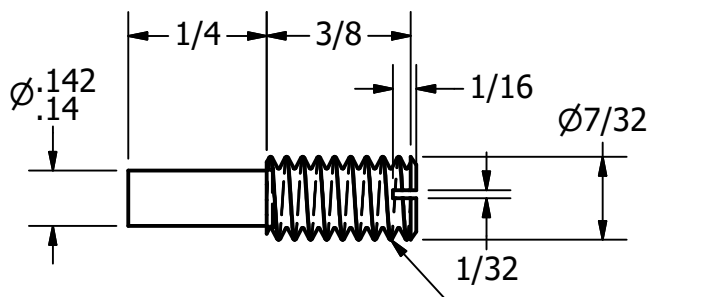
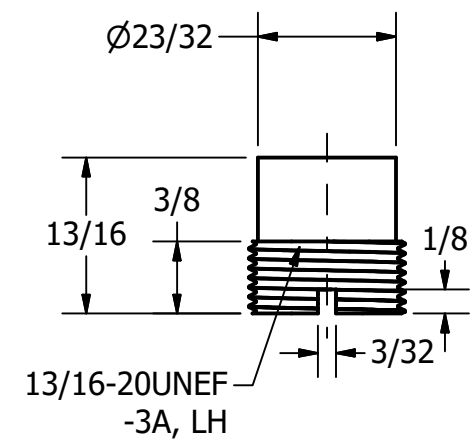


HANDLE BALL
SCALE 1 : 1

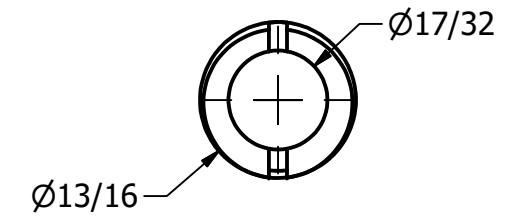


SECTION D-D
SCALE 1 : 1

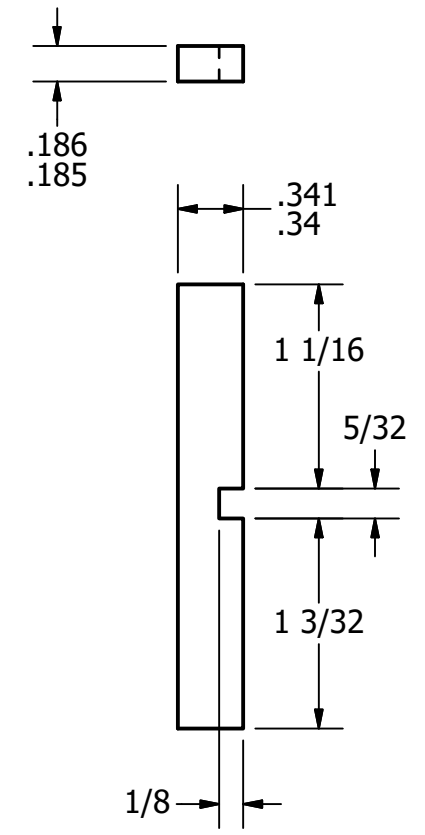
PARTS LIST				
ITEM	QTY	PART NUMBER	DESCRIPTION	MATERIAL
3	2	JAW PLATE	.1875 THICK	SAE 3140
4	1	SLIDING JAW		CAST IRON
5	2	HANDLE BALL		SAE 1020
6	1	COLLAR		SAE 1020
8	2	SLIDE KEY		SAE 1020
13	2	TAPER PIN	TAPER PIN #000	SAE 1020



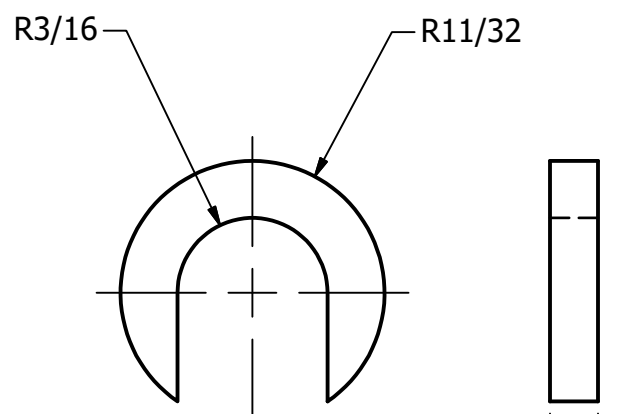
SET SCREW
SCALE 2 : 1



COLLAR
SCALE 1 : 1



SLIDE KEY
SCALE 1 : 1



SPECIAL KEY
SCALE 2 : 1

LEGEND:

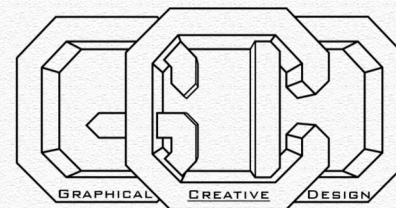
- Ø DIAMETER
- R RADIUS
- ° DEGREES
- ∇ DEPTH

GENERAL NOTES: ALL FILLETS AND ROUNDS ARE 1/8 UNLESS SPECIFIED



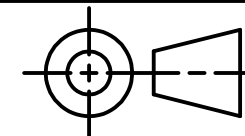
DIGITAL DESIGN
GRAPHICS
TECHNOLOGY

WWW.DDGT.NET



BRYAN LOPEZ
GRAPHIC DESIGNER

GRAPHICALCREATIVEDESIGN@GMAIL.COM



TOLERANCES UNLESS SPECIFIED:
DECIMAL INCHES:
X = ± .020
XX = ± .010
XXX = ± .005
FRACTIONAL ± 1/64"
ANGLES ± 1 DEGREE
SURFACES ∇

COURSE: DDGT 240

INVENTOR DRAWING NAME:
MACHINE VISE

FIG #: 14-71

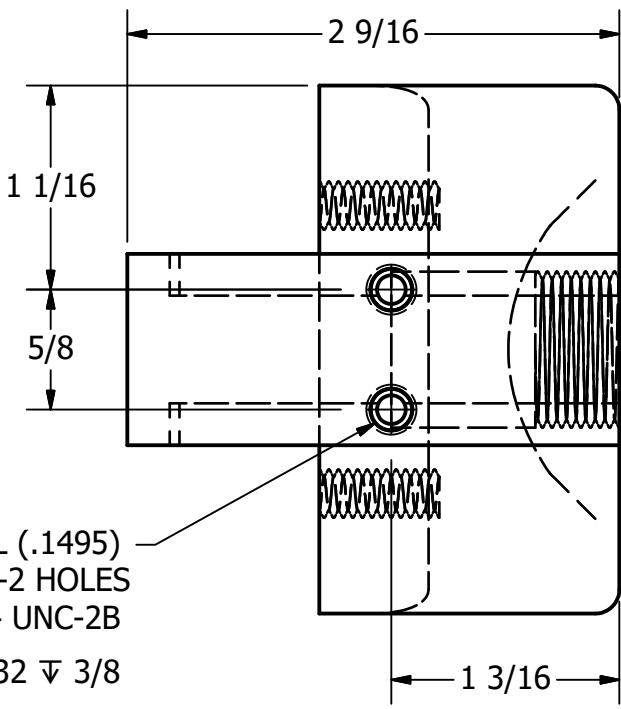
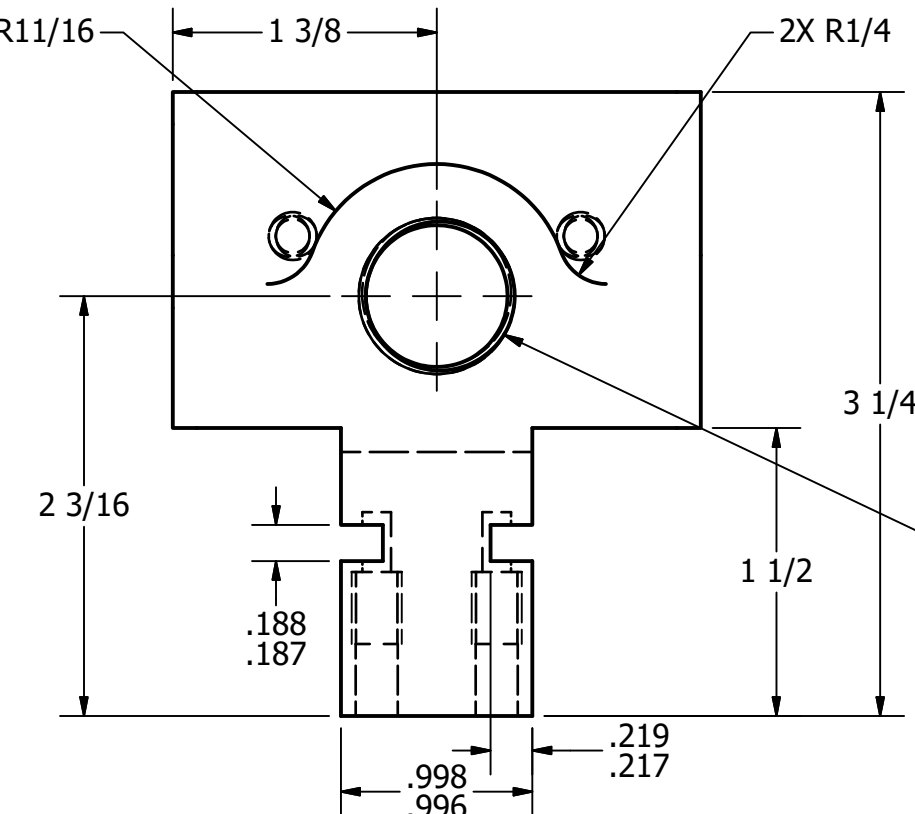
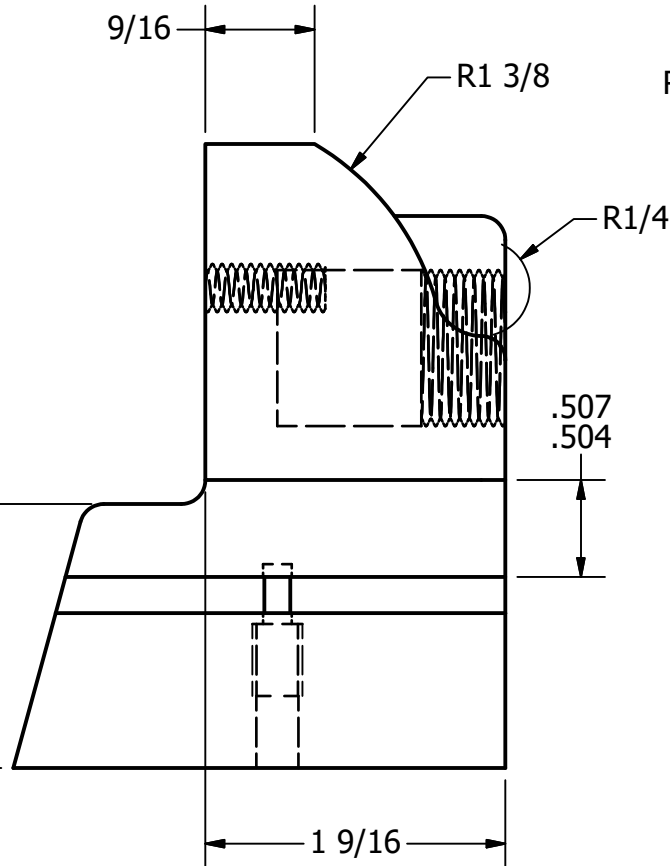
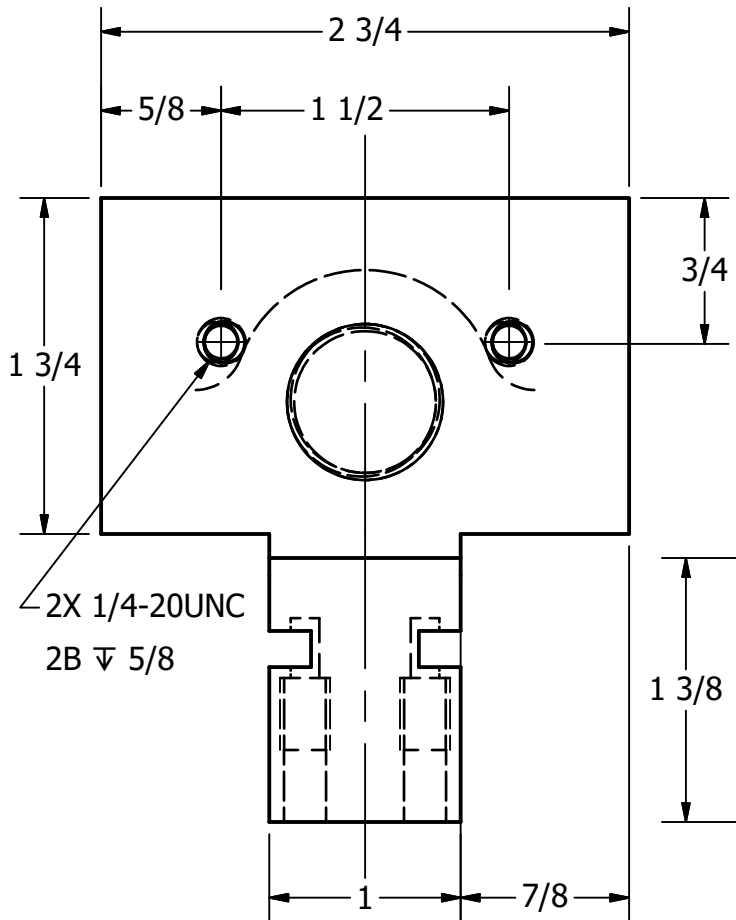
DRAFTER: B. LOPEZ

DATE: 10/2/2019

SCALE: AS NOTED

PAGE #: 3 OF 4

PARTS LIST				
ITEM	QTY	PART NUMBER	DESCRIPTION	MATERIAL
9	1	SPECIAL KEY		SAE 1020
12	2	SET SCREW	#12(.216)-24UNC-2A	SAE 1016



LEGEND:

- ∅ DIAMETER
- R RADIUS
- ° DEGREES
- ▽ DEPTH

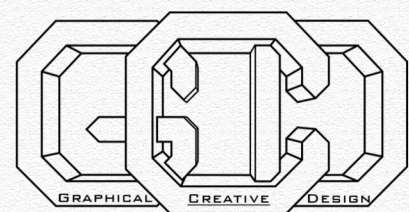
#25 DRILL (.1495)
 1 1/16 DEEP-2 HOLES
 12-24 UNC-2B
 7/32 ▽ 3/8

GENERAL NOTES: ALL FILLETS AND ROUNDS ARE 1/8 UNLESS SPECIFIED

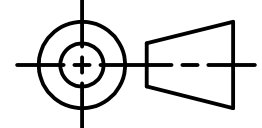


DIGITAL DESIGN
 GRAPHICS
 TECHNOLOGY

WWW.DDGT.NET



BRYAN LOPEZ
 GRAPHIC DESIGNER
 GRAPHICALCREATIVEDSIGN@GMAIL.COM



TOLERANCES UNLESS SPECIFIED:
 DECIMAL INCHES:
 X = ± .020
 XX = ± .010
 XXX = ± .005
 FRACTIONAL ± 1/64"
 ANGLES ± 1 DEGREE
 SURFACES 32 ✓

COURSE:	DDGT 240
INVENTOR DRAWING NAME:	MACHINE VISE
FIG #:	14-71
DRAFTER:	B. LOPEZ
DATE:	10/2/2019
SCALE:	AS NOTED
PAGE #:	4 OF 4